

## Case of the Month

### November 2006

**History and Signalment:** A 5 month old pug presented for repair of a congenital cleft defect involving the hard and soft palate. An attempt at repair had been performed five weeks prior to presentation, but it failed shortly after the procedure.

**Physical Exam/Diagnosis:** The midline cleft extended from the level of the 2nd premolars distally through the soft palate. Other than being small for her size (5lbs), she was healthy except for a chronic nasal discharge.



Photo of cleft prior to procedure.

**Treatment:** The hard and soft palate were closed separately. A regional nerve block was used to anesthetize the hard palate. An overlapping flap technique was used on the hard palate and a bilateral overlapping mucosal single pedicle flap was created to repair the soft palatal defect. Care was taken to preserve the major palatal artery during the procedure. 5-0 PDS was used to close the defect. An esophagostomy tube was placed prior to recovery.

Veterinary Dental Center of Tulsa  
4820 E. 33<sup>rd</sup> Street  
Tulsa, OK 74135  
(918) 749-8387  
David S. Russell, DVM

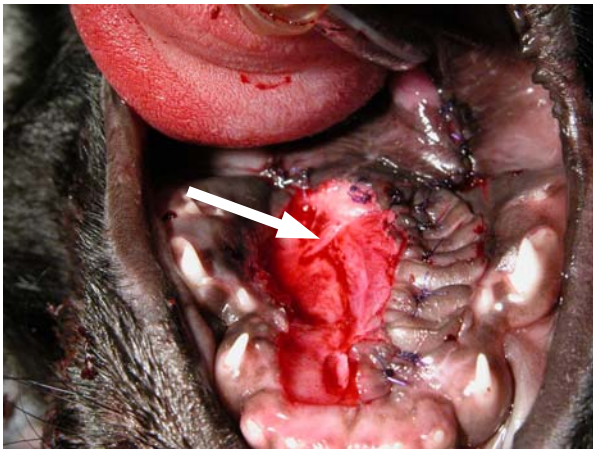


Photo taken after surgery. The arrow points to the major palatine artery.



Photo taken one month after surgery.



Photo of palate 7 months after surgery

Veterinary Dental Center of Tulsa  
4820 E. 33<sup>rd</sup> Street  
Tulsa, OK 74135  
(918) 749-8387  
David S. Russell, DVM