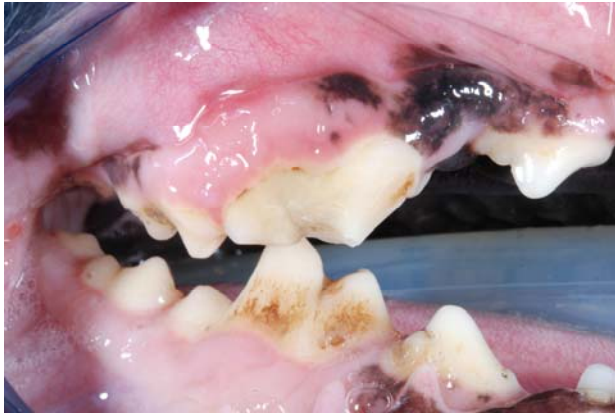
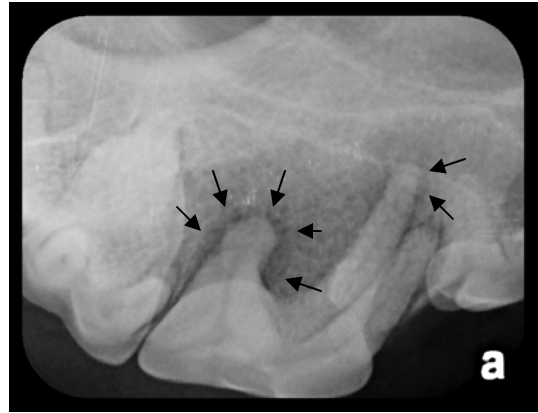


## **Uncomplicated Crown Fracture of a Maxillary 4th Premolar**



The crown of the 4th premolar was fractured, but the pulp was not exposed.



Apical bone lysis was found around the roots on the radiograph.



A tooth-colored zirconia crown was placed after performing root canal therapy.



Final radiograph of the 4th premolar.

Uncomplicated (no pulp exposure) crown fractures are commonly found in dogs. Most dogs do not display any signs of pain with uncomplicated crown fractures, but humans often report severe pain. They can be very sensitive to air (breathing), drinking cool water, and eating certain foods. Also, there are thousands of exposed tubules that can transport bacteria to the pulp chamber. The trauma alone may be enough to kill a tooth. If intraoral radiographs look normal, a sealant should be applied to protect the pulp and treat the pain. Follow-up radiographs are recommended to monitor the tooth for apical bone changes and other signs of a non-vital tooth.